

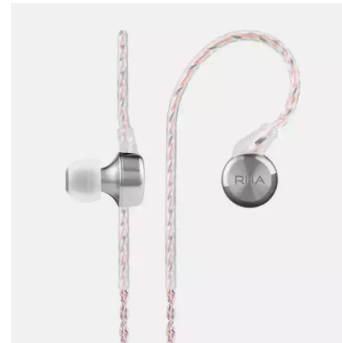
RHA CL750

Šifra: 12605

Kategorija proizvoda: In-Ear Slušalice

Proizvođač: Nedefinisan

Cena: 15.480,00 rsd



RHA's CL750 pairs a CL Dynamic transducer with signature stainless steel housings to deliver high-resolution audio with purity and accuracy.

Wideband CL Dynamic driver

Stainless steel Aerophonic™ housings

Optimized for use with amplifiers

Braided OFC cable

Includes Comply™ tips and carry case

Introducing the CL750

Contained within the CL750's stainless steel, Aerophonic™ housings, the CL Dynamic driver is engineered for control, accuracy and high quality sound reproduction across the whole audible frequency range.

Precision engineered for high-resolution audio, the CL750 can be paired with headphone amplifiers or high powered DAPs and smartphones.

CL Dynamic

Ultra-wideband transducer technology

The ultra-wideband CL Dynamic transducer is precision engineered for high purity, true-to-life sound reproduction across an extended frequency range.

A precision voice coil array, annular magnet and 9µm-thin diaphragm allows absolute control over audio reproduction at all frequencies.

Made in metal

Stainless steel, Aerophonic™ design

The CL750 features stainless steel housings in RHA's noise isolating Aerophonic™ design to transfer sound waves from driver to ear without distortion at any volume. Eight times more dense than common thermoplastics, 303F steel ensures durability and low resonance.

Advanced Cables

High-resolution signal transmission

Featuring a braided oxygen-free copper cable, the CL750 is engineered to eliminate cross-channel interference during signal transmission between the source device and drivers. Each OFC cable is coated in durable TPE with stainless steel- reinforced cable divide and 3.5mm termination.

Stay secure

Over-ear cable supports

The CL750 features flexible over-ear hooks designed to hold the headphones in position with the cable running over and behind the ear. The over-ear hooks ensure that the headphone offers a comfortable, secure fit in any ear and optimally positions the housings for effective noise isolation.

Detaljnije informacije na linku: